

PART OF THE SW.1/4, OF SECTION 24, AND THE NW., 1/4,
OF SECTION 25, T.5N., R.1W., S.L.B. & M.

HAUGEN SUBDIVISION

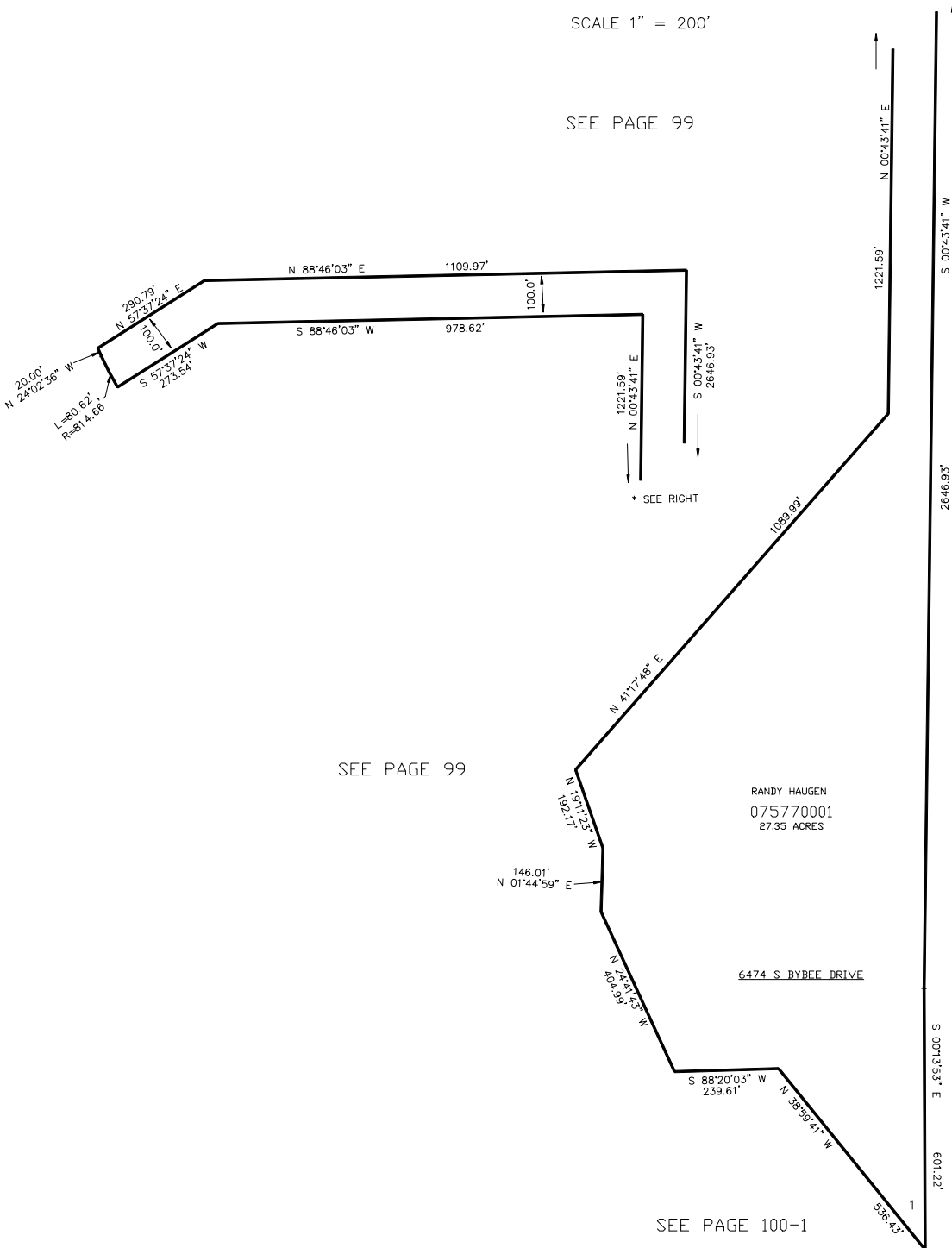
TAXING UNIT: 54

IN WEBER COUNTY

SCALE 1" = 200'

SEE PAGE 99

* SEE LEFT



SEE PAGE 99

SEE PAGE 99

SEE PAGE 100-1

FOR COMPLETE ENG DATA SEE
ORIGINAL DEDICATION PLAT IN
BOOK 54, PAGE 46 OF RECORDS.